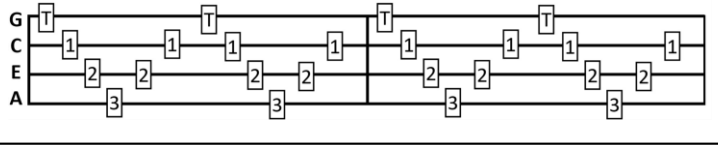


# CAN'T HELP FALLING IN LOVE WITH YOU (Chord-melody)

Hugo Peretti, Luigi Creatore, George David Weiss (1961)  
Melody based on "Plaisir d'amour", Jean-Paul-Égide Martini (1784)

This is a nice picking pattern to accompany chord-melody playing. Play the standard chords (ignoring the x's & red dots). If playing with a high G-string, play the Thumb notes very softly so they don't dominate the melody notes.



This tune uses chord-melody technique.

- You can read the tab as written
- Alternatively, you can focus on the chord symbols: playing the highest permissible note in each chord - that is, don't play strings marked 'x'. If there are no xs, play the full four strings. The red dots more clearly show which is the highest, or melody, note (when it is not on the A string). Where there is no chord symbol, play the single note.
- All chords (or partial chords) should be strummed slowly over the strings

Wise men say on-ly fools rush in, but I can't help fall- ing in love with you.  
Shall I stay? Would it be a sin if I can't help fall- ing in love with you?

Like a ri-ver flows Sure-ly to the sea, Dar-ling, so it goes, Some things are meant to be.

Take my hand, take my whole life, too, for I can't help fall- ing in love with you.

Arranged by Bruce Watson,  
based on an arrangement by Chantelle Riordan  
For educational use only