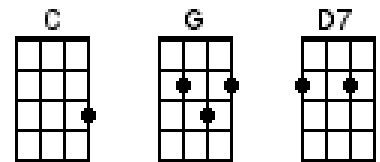


ALOHA 'OE (Chorus only)

Lili'uokalani 1878



This tune uses chord-melody technique.

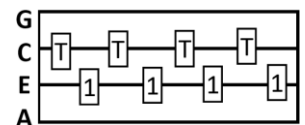
- You can read the tab as written
- Alternatively, you can focus on the chord symbols: playing the highest permissible note in each chord - that is, don't play strings marked 'x'. If there are no xs, play the full four strings. The red dots more clearly show which is the highest, or melody, note (when it is not on the A string). Where there is no chord symbol, play the single note.

⤴ This symbol means a slow strum over the strings, from the G string towards the C E & A strings

Strumming pattern (with swing). This is used if you are singing along in the usual way, not when playing chord-melody style

1	&	2	&	3	&	4	&	1	&	2	&	3	&	4	&
↓		↓		↑	↓	↑	↓	↑	↓	↑	↓	↑	↓	↑	↓

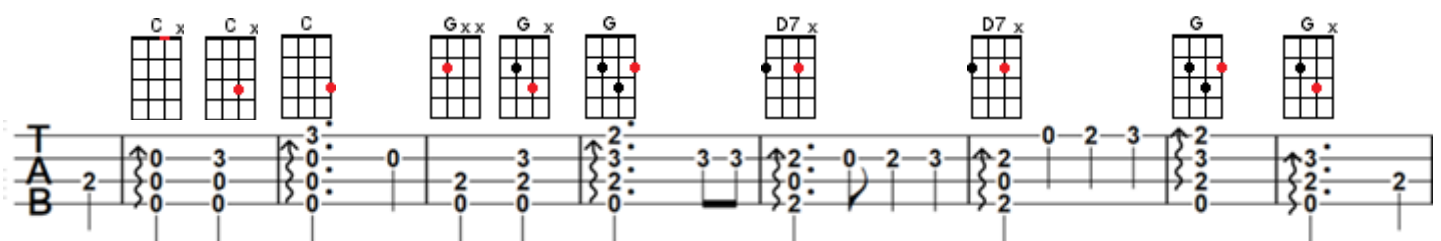
The song (sung, or played in chord-melody style) can also be accompanied by picking the middle two strings



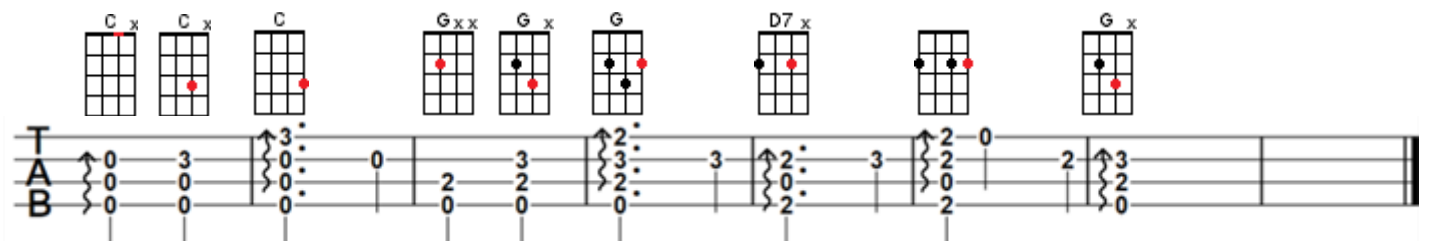
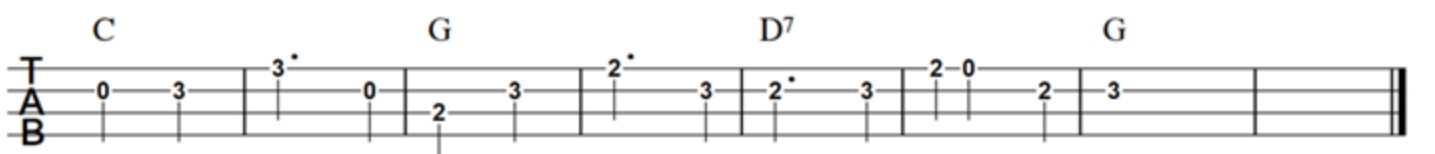
Simple melody:



Chord/Melody:



A lo-ha-'oe, A-lo-ha-'oe E-ke o-na-o-na no-ho i ka li-po, One
Fare-well to you, Fare-well to you, The charm-ing one who dwells in shaded bow-ers, One



fond em-brace A ho'i a'e au, Un-til we meet a-gain
fond em- brace 'ere I de-part, Un-til we meet a-gain

Arranged by Bruce Watson
For educational use only
Not for Sale