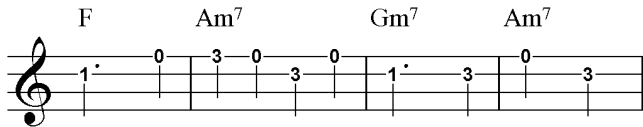
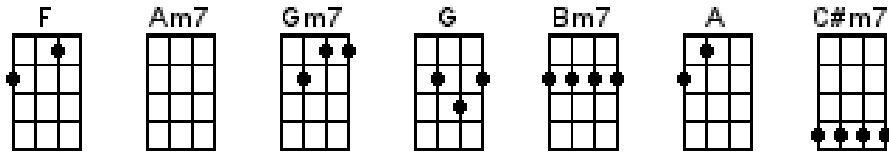
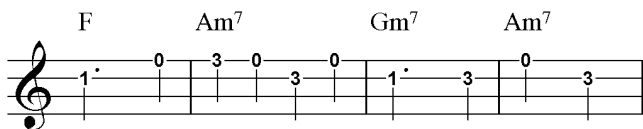


Toast and Marmalade for Tea

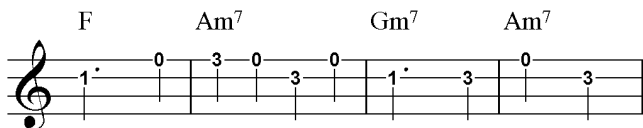
Tin Tin 1971



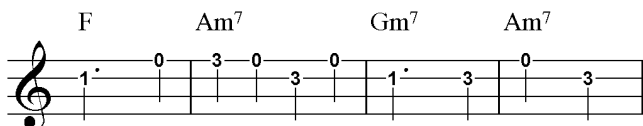
F **Am7** **Gm7**
Toast and marmalade for tea
 Am7 **F**
Sailing ships upon the sea
 Am7 **Gm7**
Aren't lovelier than you
 Am7 **F**
Or the games I see you play



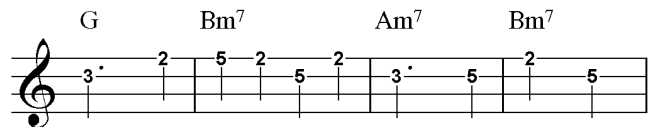
F **Am7** **Gm7**
You, more lovely than the day
 Am7 **F**
When the sun is in your eyes
 Am7 **Gm7**
I see through your disguise
 Am7 **F**
All the games I see you play



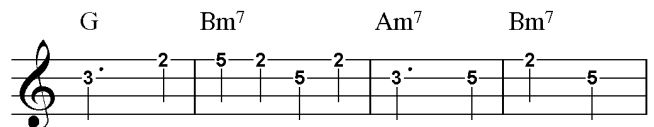
F **Am7** **Gm7**
You, more lovely than the day
 Am7 **F**
When the sun is in your eyes
 Am7 **Gm7**
I see through your disguise
 Am7 **F**
All the games I see you play



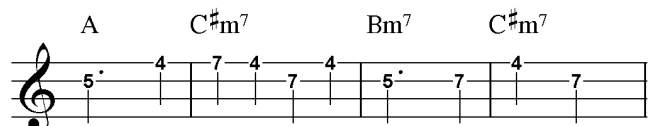
G **Bm7** **Am7**
Toast and marmalade for tea
 Bm7 **G**
Sailing ships upon the sea
 Bm7 **Am7**
Aren't lovelier than you
 Bm7 **G**
Or the games I see you play



G **Bm7** **Am7**
You, more lovely than the day
 Bm7 **G**
When the sun is in your eyes
 Bm7 **Am7**
I see through your disguise
 Bm7 **G**
All the games I see you play



A **C#m7** **Bm7**
Toast and marmalade for tea
 C#m7 **A**
Sailing ships upon the sea
 C#m7 **Bm7**
Aren't lovelier than you
 C#m7 **A**
Or the games I see you play



A **C#m7** **Bm7**
You, more lovely than the day
 C#m7 **A**
When the sun is in your eyes
 C#m7 **Bm7**
I see through your disguise
 C#m7 **A**
All the games I see you play

