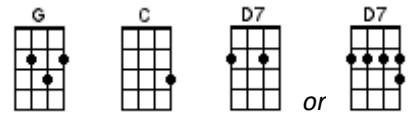
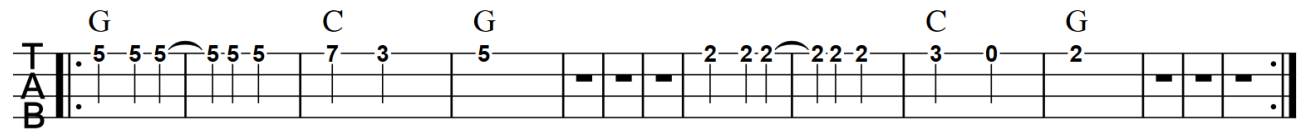


RING OF FIRE

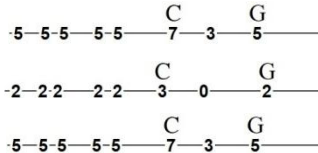
Johnny Cash



INTRO RIFF:



[G] Love is a [C] burning [G] thing
 And it makes a [C] fiery [G] ring
 Bound by [C] wild de[G]sire
 I fell in to a [C] ring of [G]fire



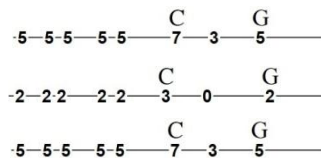
Riffs start on last word of line

[D7] I fell in to a [C] burning ring of [G] fire
 I went [D7] down down down
 And the [C] flames went [G] higher
 And it burns burns burns
 The [C] ring of [G] fire the [C] ring of [G] fire

INTRO RIFF

[D7] I fell in to a [C] burning ring of [G] fire
 I went [D7] down down down
 And the [C] flames went [G] higher
 And it burns burns burns
 The [C] ring of [G] fire the [C] ring of [G] fire

[G] The taste of [C] love is [G] sweet
 When hearts like [C] ours [G] meet
 I fell for you [C] like a [G] child
 Oh but the [C] fire went [G] wild



[D7] I fell in to a [C] burning ring of [G] fire
 I went [D7] down down down
 And the [C] flames went [G] higher
 And it burns burns burns
 The [C] ring of [G] fire the [C] ring of [G] fire
 The [C] ring of [G] fire the [C] ring of [G] fire