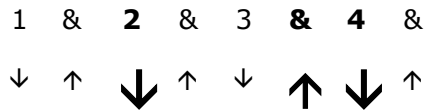
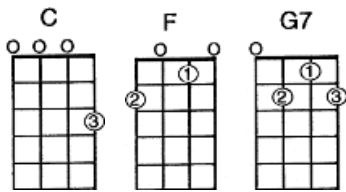
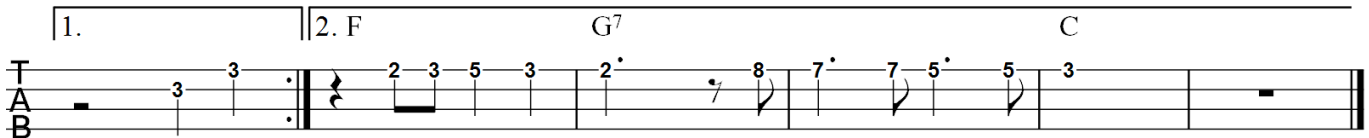


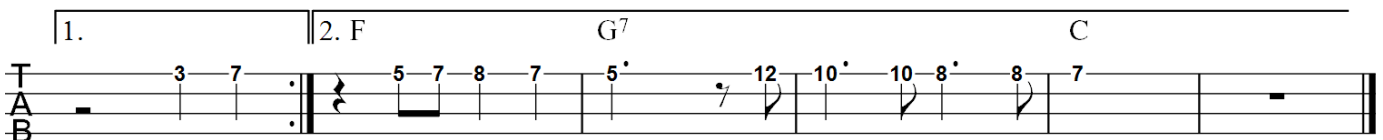
# PU'UANAHULU



## Riff



## Harmony riff



## Riff

**C**  
**Nani wale Pu'u Anahulu i ka 'iu 'iu**  
**G7** **F**  
**Aina pali kaulana pu'u kinikini** **Repeat**  
**G7** **C**  
**Aina pali kaulana pu'u kinikini**

*Beautiful Pu'uanahulu in its lofty realm*  
*A land of cliffs famous for its many hills*

## Riff

**C** **F**  
**Lu 'ia mai lu 'ia mai ko 'oukou aloha**  
**G7** **C** **Repeat**  
**E na manu 'o 'o hulu melemele**  
**G7** **C**  
**E na manu 'o 'o hulu melemele**

*Offer, give your love*  
*Oh you 'o 'o birds with yellow feathers*

## Riff

**C** **F**  
**Ha-'ina 'ia mai ana kapuana**  
**G7** **C** **Repeat**  
**Kaulana kou inoa Pu'uanahulu**  
**G7** **C**  
**Kaulana kou inoa Pu'uanahulu**

*Tell the theme of my song*  
*Famous is your name Pu'uanahulu*

## Riff